

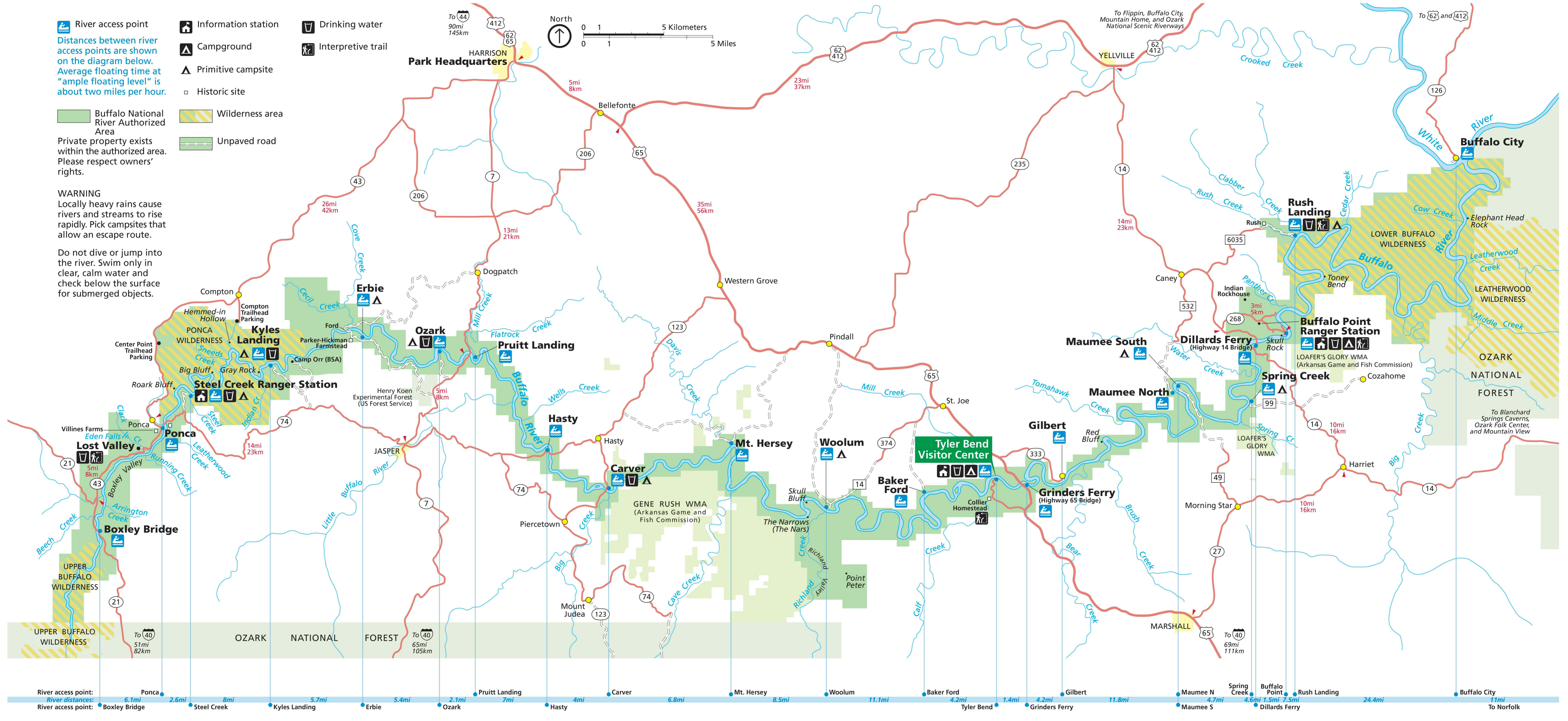
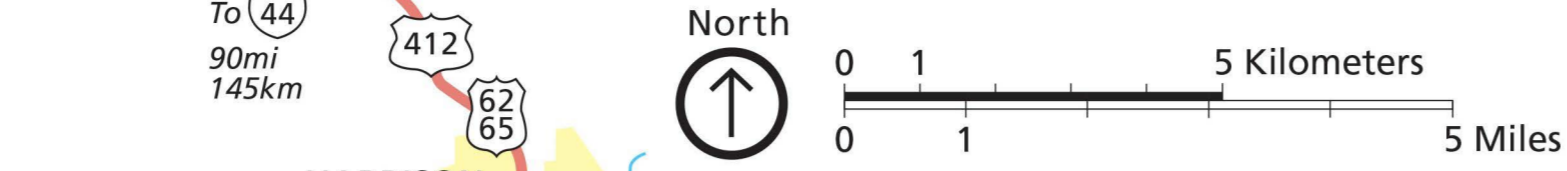
- River access point
- Information station
- Drinking water
- Campground
- Primitive campsite
- Historic site
- Wilderness area
- Unpaved road
- Interpretive trail

Distances between river access points are shown on the diagram below. Average floating time at "ample floating level" is about two miles per hour.

Buffalo National River Authorized Area  
Private property exists within the authorized area. Please respect owners' rights.

**WARNING**  
Locally heavy rains cause rivers and streams to rise rapidly. Pick campsites that allow an escape route.

Do not dive or jump into the river. Swim only in clear, calm water and check below the surface for submerged objects.



From	To	Distance (mi)	Distance (km)
Ponca	Boxley Bridge	6.1	9.8
Boxley Bridge	Steel Creek	2.6	4.2
Steel Creek	Kyles Landing	8	12.9
Kyles Landing	Erbie	5.7	9.2
Erbie	Ozark	5.4	8.7
Ozark	Pruitt Landing	2.1	3.4
Pruitt Landing	Hasty	7	11.3
Hasty	Carver	4	6.4
Carver	Mt. Hersey	6.8	10.9
Mt. Hersey	Woolum	8.5	13.7
Woolum	Baker Ford	11.1	17.9
Baker Ford	Tyler Bend	4.2	6.8
Tyler Bend	Grinders Ferry	1.4	2.3
Grinders Ferry	Gilbert	4.2	6.8
Gilbert	Maumee N	11.8	19.0
Maumee N	Maumee S	4.7	7.6
Maumee S	Spring Creek	4.6	7.4
Spring Creek	Buffalo Point	1.5	2.4
Buffalo Point	Rush Landing	7.5	12.1
Rush Landing	Buffalo City	24.4	39.3
Buffalo City	To Norfolk	11	17.7